



## Mr. Philip L. Shea

October 19, 1941 - December 30, 2025

### PHILIP L. SHEA

Former State Senator, State Representative,  
Lowell City Councilor

A true friend of Lowell and a “Kid from the Acre”

Philip L. Shea, a prominent political figure in the City of Lowell and the Commonwealth of Massachusetts for over 50 years, passed away on Tuesday, December 30, 2025 at the age of 84. He was the beloved husband of Anne Farley, who along with his son Brian Shea and dear friend Mark Briere were together at Phil's side when he passed.

Phil was born in Lowell on October 19, 1941, a son of Joseph Shea and Ann T. (Handley) (Shea) Oliver.

He was a proud resident of the Acre Section of Lowell, growing up on Lewis Street with his widow mother and three brothers. Phil and his brothers enjoyed caddying at Vesper CC during the day, and shining shoes for 10 cents a pair in the evenings. As a young boy, Phil attended St. Patrick's Boys School, and graduated from the Bartlett Jr. High School. He then attended Lowell High School, graduating with the class of 1959, the same year he won the Greater Lowell (Novice) Golden Gloves Boxing Championship (139 pounds). He was also a member of the Lowell High School Golf team for 3 years.

Phil matriculated to Bentley College, then Bentley School of Accounting, where he graduated in June of 1962, attaining his enrollment to practice

before the Internal Revenue Service. He was a self-employed Tax accountant, a former vice president and assistant to the president of the Union National Bank, a self-employed Business Strategies Specialist, and later in his life as Chief Financial Officer for Secretary of the Commonwealth William F. Galvin. The pinnacle of his life's work was a long and successful career in local and state politics.

He was elected to the Lowell City Council, serving from 1970-1973. He was then elected a member of the Massachusetts House of Representatives from 1973-1978, when he was elected State Senator, a position he held until 1984. Phil was the only person to be elected and to have served the city in all three categories since the Plan E form of Government was created in 1944. While serving in the State Legislature, Phil was involved and participated in many legislative accomplishments, including Creating the Lowell Heritage State Park, repealing the "Blue Laws" to allow stores opening on Sunday in Massachusetts, establishing the Housing Court System in Massachusetts, funding for the Rourke Bridge, and increased new school construction reimbursement to cities and towns from 80% to 90% (1976).

Phil was the former vice president of the Lowell Boys Club Board of Directors, former board member of the Lowell Mental Health Association, past treasurer of Camp Paul for exceptional children, the City of Lowell representative to the Lowell Regional Transit Authority Board (vice chairman), and a member and Chairman of the Lowell Housing Authority, the City of Lowell Stadium Commission, and the Community Preservation Committee. In 2016, Phil was inducted into the Distinguished Alumni Association of Lowell High School, at that time being one of approximately 70 inductees out of a total of 50 thousand graduates. In June of 2021, the City of Lowell named the Market Street bridge the Philip L. Shea Bridge after him, for his 50 plus years of service to the city, an honor which he said was very humbling and meant the world to him. His contributions to civic and charitable organizations in the Acre and locally throughout the city are beyond mention.

Phil held membership at Long Meadow Golf Club for the past 70 years, was a

member of Mount Pleasant Golf Club, and a former member of Vesper CC. Phil loved to travel, this included trips Ireland, Aruba, Florida, and the Carolinas. He attended sports events, golf tournaments, football games in stadiums around the country with his sons and friends. Phil enjoyed music and going to concerts. He was a big supporter of his grandchildren's sporting events. Phil enjoyed bringing friends to play in Long Meadow Member Guests Tournaments. He was a genuine friend to many and always a gentleman. Phil never forgot where he came from!

Phil is survived by his wife Anne Farley; his children, Linda Hayward and her husband Brian of Bedford, NH, Brian Shea and his wife Tracy of Norton, MA, Maureen Thurston and her husband Todd of Barrington, RI, and Michael Shea and his wife Alda of Stamford, CT; ten grandchildren, Patrick Hayward of Bedford, NH, Lauren Hayward of New York City, Calie Shea, Sydney Shea, and Madeline Shea all of Norton, Chloe Shea and Tessa Shea of Stamford, Max Thurston of South Boston, Owen Thurston, and Molly Thurston, both of Barrington; his brother, Ronald Shea of Ashland, KY; his former spouse, Judith Shea of N. Chelmsford; several nieces and nephews living in Ashland, KY, Stamford, CT, Kingston, NH, Dracut, MA, Quincy, MA, and Burlington, VT. He also leaves two sisters-in-law, Kate Farley and Patricia Shupp and her husband Ed; and two very dear friends, Mark Briere and Kevin Murphy. Phil was the brother of the late Joseph Shea and Ralph Shea.

FAMILY AND FRIENDS ARE INVITED TO ATTEND PHIL'S CALLING HOURS ON WEDNESDAY, JANUARY 7, 2026, FROM 3 PM UNTIL 7 PM AT THE FAY McCABE FUNERAL HOME, 105 MOORE STREET, LOWELL. HIS FUNERAL WILL BEGIN ON THURSDAY MORNING AT 9 O'CLOCK FROM THE FUNERAL HOME, FOLLOWED BY HIS FUNERAL MASS AT 10 O'CLOCK AT ST. PATRICK'S CHURCH IN THE ACRE, LOWELL. BURIAL WILL FOLLOW AT ST. CATHERINE'S CEMETERY, WESTFORD.

AS AN EXPRESSION OF SYMPATHY, DONATIONS IN PHIL'S MEMORY  
MAY BE MADE TO THE LOWELL YOUTH ACTIVITIES PROGRAM, PO BOX  
1103, LOWELL, MA 01853, TO BENEFIT THE ANNUAL PHILIP L. SHEA  
SCHOLARSHIP AWARDS RECEPTION. (<https://lowellyouth.org/>)  
OR TO THE LONG MEADOW GOLF CLUB SCHOLARSHIP FUND, 165  
HAVILAH ST. LOWELL, MA 01852.

ARRANGEMENTS BY THE  
FAY McCABE FUNERAL DIRECTORS  
978-459-9222 [www.faymccabe.com](http://www.faymccabe.com)

# Cemetery Details

## St. Catherine's Cemetery

20 Pine Ridge Road  
Westford, MA

# Previous Events

## Calling Hours

JAN 7. 3:00 PM - 7:00 PM (ET)

Fay McCabe Funeral Home  
105 Moore Street  
Lowell, MA 01852  
(978) 459-9222  
sean@faymccabe.com  
<https://www.faymccabe.com>

## Funeral Mass

JAN 8. 10:00 AM (ET)

St. Patrick Church  
282 Suffolk Street  
Lowell, MA 01854  
(978) 459-0561  
<http://stpatricklowell.org>

## Burial

JAN 8. 12:00 PM (ET)

St. Catherine's Cemetery  
20 Pine Ridge Road  
Westford, MA

# Tribute Wall

TB

“ I am sorry for it taking me so long for putting a tribute here to my friend of over 50 years. Anybody reading this knows my great admiration for Phil. I worked in every one of his campaigns. Sat in the Lowell City Council Chambers when he lost the Mayors race, then years later, lost out on being City Manager, both by just one vote. Was lucky to be at all his swearing in ceremonies at the State House. Then years later we both served together on the Lowell Regional Transit Authority. I was Chair, and he was Vice-Chair. We were not as close as we were years ago, but we always kept in touch, either through a phone call or an occasional lunch. Sitting in Saint Patricks Church on January 8th, I just sat there thinking about all our good times, and sometimes bad times. Seeing people like Buddy Flynn and many others from the first campaigns brought a tear to my eyes. It meant the world to me sitting there and getting handshakes from his sons Brian and Michael... and smiles and waves from his daughters Linda and Maureen, whom I saw all grow up. Finally a hug from his wife Anne, who I never got to know real well, but I do know how much Phil loved her, and talked about her so fondly. Sorry for being so long here, I actually could go on longer. I will always remember two things you always said, "don't forget about the people you see on the way up, because you will be seeing them on the way down" and "In politics, always keep your word". Rest in Peace Phil. See you on the other side.

---

**Tom Bomil** - January 31 at 06:46 AM



“ 4 files added to the album *Tribute Wall*



---

**Kate Farley** - January 06 at 09:01 PM

FK

“ *To All of The Shea Family,  
I first met Phil at Vesper Country Club when I was shining shoes.  
Phil was a True Gentleman who had me laughing every time when  
he had his shoes shined by me. Always had a Great BIG Smile on  
his face!!!! He always treated me like gold!!!! Again, I am sooo sorry  
to hear of his passing. From one "Acre" boy to another "Acre" boy.  
Only wish I had known Phil a lot sooner.*

---

**Falcon Kierce** - January 06 at 12:13 AM

JK

“ *Sharing my heartfelt condolences to the Shea family. Phil was  
always very kind and supportive to me whenever I ran in to him at  
the East End Club or as a guest at Long Meadow. We were from  
different generations but we had a common bond as two kids from  
the Acre. He was a shining example of a life well lived. Rest  
peacefully.  
Jim Keefe*

---

**James Keefe** - January 05 at 12:11 PM

FC

“ I grew up with the Shea family who at the time lived on Litchfield Terrace in Lowell, went to school with Ralph and Ronnie. Played a lot of golf with brother's Joe and Ralph some with Phil (Sooky) as we knew him then. Phil was responsible for my getting a membersdhip at Longmeadow Golf Club, always ready to help someone. My condolences to Ronnie and Phil's family.

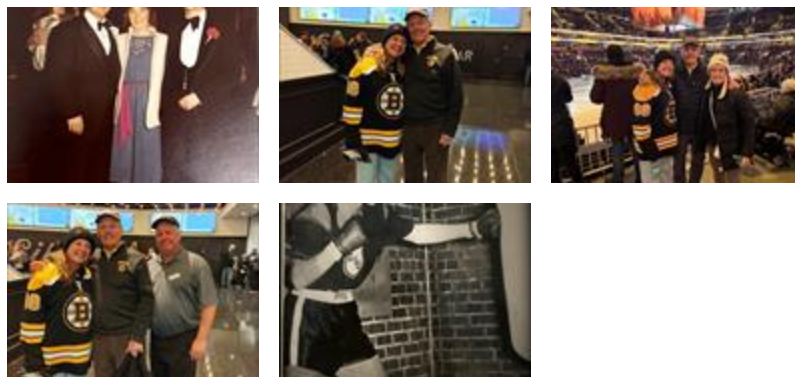
*Frank Clark  
ChIPLEY Florida*

---

**Frank clark** - January 04 at 02:43 PM



“ 8 files added to the tribute wall



---

**Kate Farley** - January 02 at 08:14 PM

SR

“ Sean & Erin Rourke lit a candle in memory of Mr. Philip L. Shea



---

**Sean & Erin Rourke** - January 02 at 08:05 PM